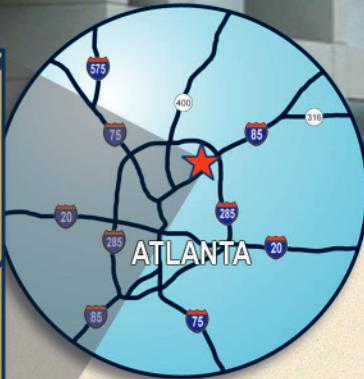


# NORTHEAST EXPRESSWAY

1800 NORTHEAST EXPRESSWAY • ATLANTA, GA 30329



## PROPERTY FEATURES

- **±142,966 SQ. FT. 2-STORY BUILDING**
- **LOCATED NEAR THE INTERSECTION OF I-85 AND CLAIRMONT ROAD**
- **GREAT VISIBILITY FROM I-85**
- **SUITES AVAILABLE FROM 38,000 SQ. FT.**
- **RETAIL, OFFICE, AND WAREHOUSE SPACE AVAILABLE**

### DEMOGRAPHIC INFORMATION

	1 MILE	3 MILES	5 MILES
POPULATION	19,078	136,913	328,647
2028 POPULATION PROJECTION	19,361	141,837	339,814
AVG. HOUSEHOLD INCOME	\$114,307	\$146,210	\$156,944

 THE  
**MALON D. MIMMS**  
COMPANY

For Leasing Information

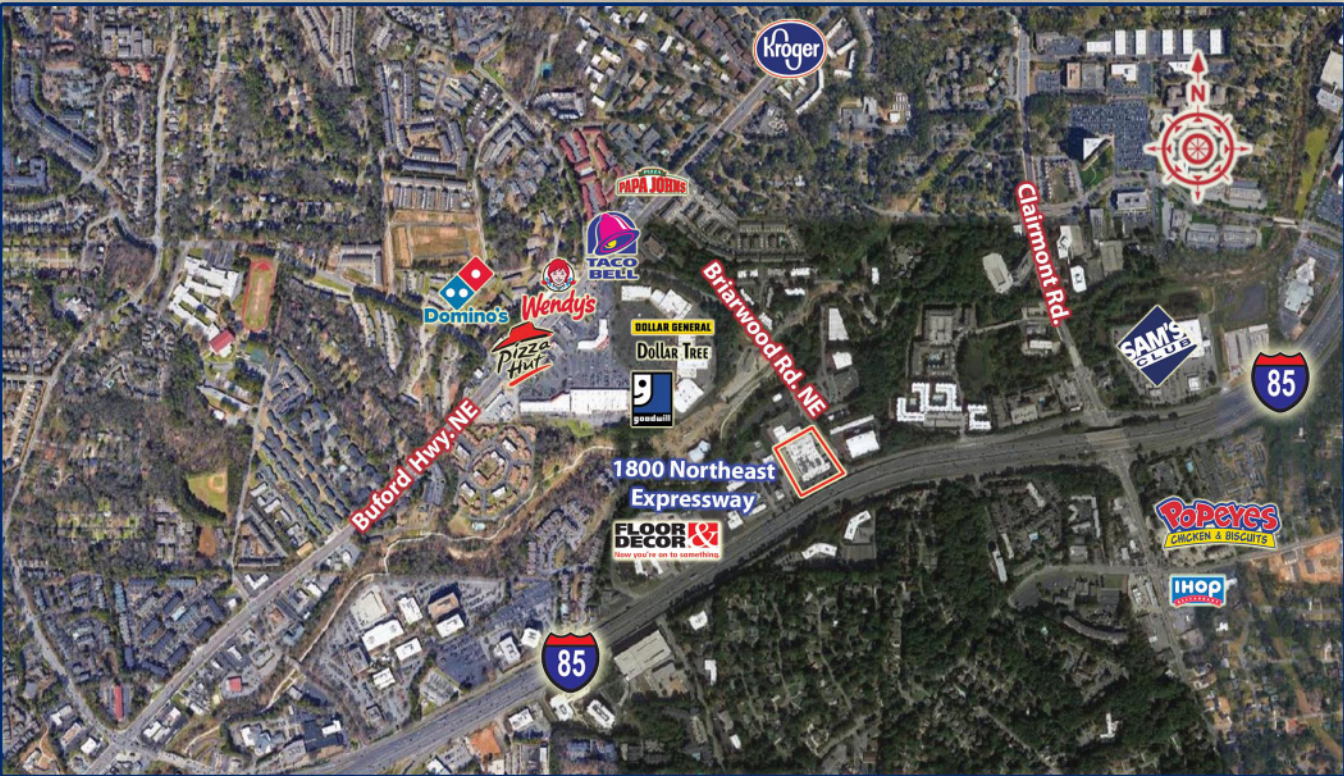
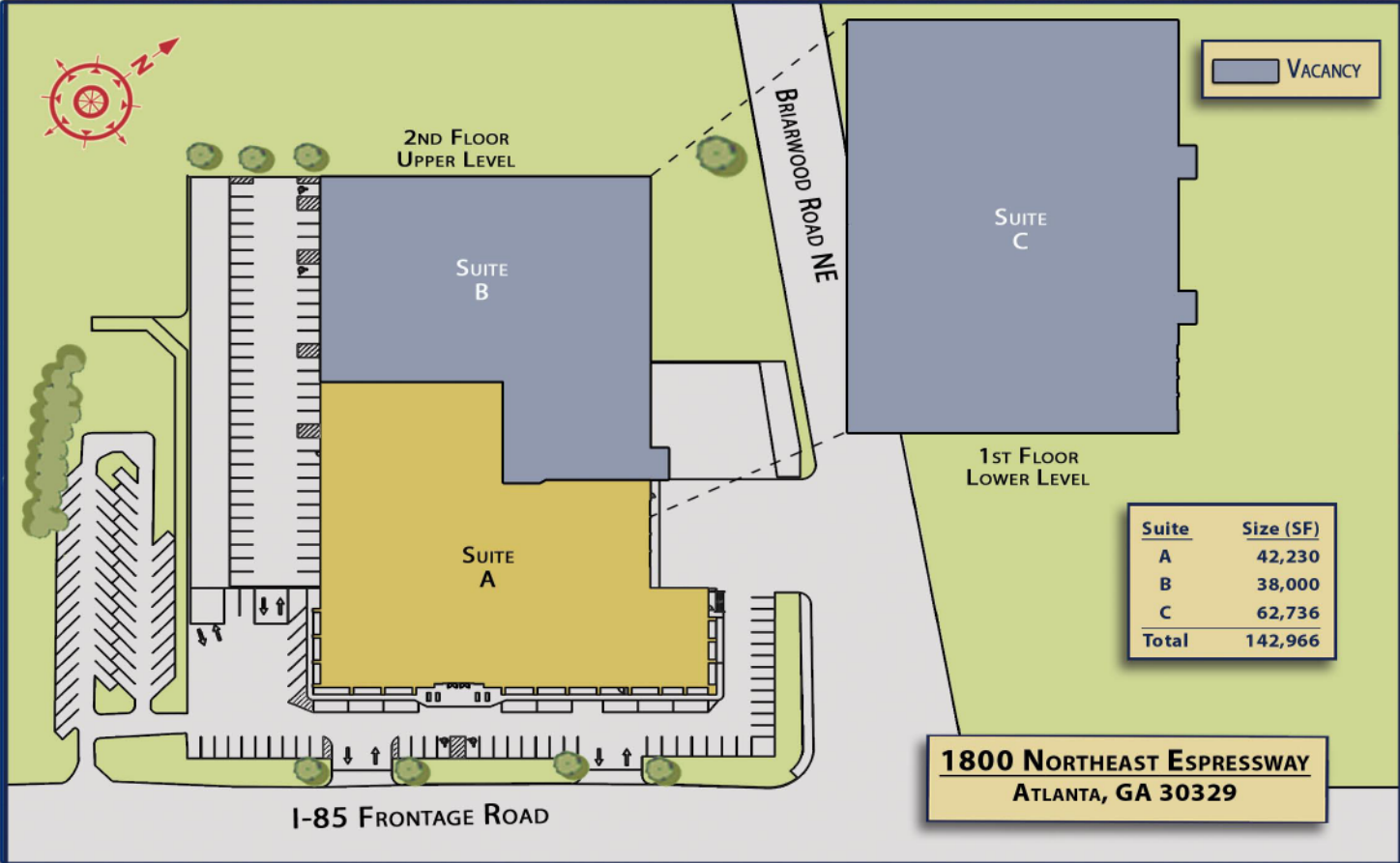
**LEO TERRAZAS**  
**770-518-3083**

85-A Mill Street | Suite 100 | Roswell, Georgia | 30075  
770-518-1100 | [www.mimms.org](http://www.mimms.org)

[leo@stewardscre.com](mailto:leo@stewardscre.com)

THE  
MALON D. MIMMS  
COMPANY

A	Recreational Equipment, Inc. ....	42,230 sq ft
B	Available .....	38,000 sqft
C	Available .....	62,736 sqft
Total	.....	142,966 sq ft



Information contained herein has been obtained from a reliable source. The Malon D. Mimms Company has no reason to doubt its accuracy, but we can not guarantee it. ©2023